



මහනාම විද්‍යාලය - කොළඹ 03
Mahanama College - Colombo 03

පළමු වාර පරීක්ෂණය - 2023
First Term Test - 2023

11 ශ්‍රේණිය
Grade 11

තොරතුරු හා සන්නිවේදන තාක්ෂණය I

Information and Communication Technology I

කාලය : පැය එකයි
Time : One Hour

•Answer all Questions.

- The best-described statement/s, related to data and information is/are,
 - Information is more meaningful when compared to data.
 - The value of information is high when it is closer to time.
 - Data can be used in making decisions, but information cannot be used in making decisions.

(1) A only (2) B only (3) A and B only (4) A, B and C
- The correct answer which shows the features of agricultural industry and health sector respectively,
 - automated water supply system, tele surgery
 - computerized Axial Tomography Machine, blood pressure measuring machine
 - automatic weed remover, farm management
 - e-banking system, blood sugar testing machine
- The correct statement/s regarding the generations of computer is/are,
 - In third generation computers, keyboard and mouse introduced for data input.
 - graphical user interfaces have been used in fourth generation computers.
 - Microprocessors used in second-generation computers.

(1) A and C only (2) A and B only (3) B and C only (4) A, B, C all
- Which of the following is an incorrect statement regarding computers used in the first generation?
 - Using machine language
 - Using punch card for data storage.
 - Using concept of stored programming.
 - Using operating system.
- Following statements regarding the evolution of computers.
 - Joseph Jacquard invented the mechanical weaving machine.
 - The root of the computer's origin is the concept of logarithms.
 - Ada Augusta Lovelace is the first computer programmer.
 - Blaise Pascal adding Machine is the world first machine that performs mechanical arithmetic.

Which of the above are correct?

- (a) only (2) b only (3) a, c, and d only (4) All a,b,c and d.

6. Following is an image in backside page of a book. What is the correct answer for the code represented by this image and its' duty?

- A Bar Code -> a bar code number that can be taken details of a good
- B OR Code -> a bar code number that can be taken details of a good
- C Bar Code -> a web address of a good
- D OR Code -> a web address of a good



7. An input device which recognizes marks made using a pencil or pen, in pre-defined places and Sends about those marks to the computer by using,

- (1) Optical Character Reader
- (2) Magnetic Ink Character Reader
- (3) Optical Mark Reader
- (4) Bar Code Reader

8. Correctly match the function performed by the physical components of a computer system shown in 'A' to the 'B' column

	A		B
1	Joystick	A	Only outputs information for displaying on the screen
2	Magnetic Ink Character reader(MICR)	B	A computer pointing device.
3	Web camera	C	Used to check the accuracy of checks.
4	Monitor	D	Used in video conferencing.

- (1) 1 - B, 2 - C, 3 - D, 4 - A
- (2) 1 - C, 2 - A, 3 - D, 4 - B
- (3) 1 - B, 2 - C, 3 - A, 4 - D
- (4) 1 - A, 2 - B, 3 - C, 4 - D

9. The ...A... of a hard disk keeps the Platter and rotates it, and the magnetic data on the platter is read and written on the platter by the ...B... Also, the ...B... is moved around by the ...C... so that the data can be written and read at any point on the platter.

- (1) Actuator arm, Head, Actuator
- (2) Actuator, Spindle, Actuator arm
- (3) Spindle, Head, Actuator arm
- (4) Actuator arm, Head, Spindle

10. Two trains moving to opposite directions through a single-track tunnel on a railway line can be Taken as an example for,

- (1) Simplex mode of data transmission
- (3) Full Duplex mode of data transmission
- (2) Half Duplex mode of data transmission
- (4) Point to Point mode of data transmission

11. Which expressions from followings are true regarding the computer memory.

- D The Cache memory in the processor holds frequently using data by the processor.
- E BIOS reads the Master Boot Record (MBR) at the start up.
- F The data in ROM get deleted when the computer power is disconnected.

- (1) A and B Only
- (2) A and C only
- (3) B and C only
- (4) A,B and C all

20. Consider following expressions.

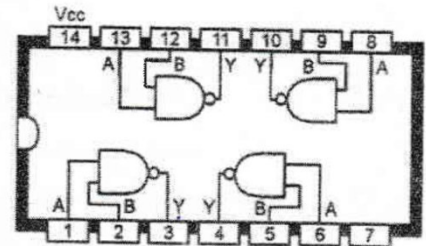
- A. Four bits are used to represent a single digit in BCD.
- B. 256 is the maximum number of characters representable in ASCII.
- C. 256 is the maximum number of characters representable in EBCDIC.
- D. Unicode is used in websites and online newspapers.

What can be considered as correct expressions?

- (1) A Only (2) A and B Only (3) A,C and D Only (4) All of above

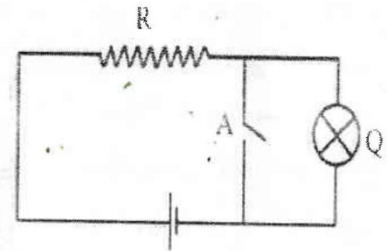
21. Following is a diagram which denotes the content of an Integrated circuit. Here what is the correct answer of the Output in 3 and 10 ports after inputting 1 and 0 into 1,2 And 8,9 ports respectively?

- (1) 0,0 (2) 0,1 (3) 1,0 (4) 1,1



22. What is the Logic Gate representing in below circuit?

- (1) NOT (2) AND (3) OR (4) NAND



23. Money locker of a teller machine used in paying Counter opens when electricity is available and identifying the finger print or face of the cashier. What is the correct order of logic gates regarding above process Respectively?

- (1) OR gate AND gate (2) NOT gate AND gate (3) AND gate OR gate (4) NAND gate AND gate

24. Operating systems are considered indispensable for computers and mobile phones. Select only the most accurate statement.

- (1) A multi-user operating system that can perform several tasks simultaneously.
- (2) Android OS is a product of Apple company.
- (3) Operating systems that provide output as soon as input is provided are Real-time operating system.
- (4) Isuru Linux is a commercial operating system owned by Sri Lanka.

25. When considering utility software and application software,

- A. The application software manages all the hardware and software on the computer.
- B. Word processing software and computer games are examples of the application software.
- C. Utility software is designed to assist in the analysis and maintenance of other software installed in the computer.
- D. Examples of utility software include antivirus software and backup software.

Which of the following is correct from the above statements,

- (1) A and B only. (2) A, B and D only. (3) B, C and D only. (4) All A, B, C and D.

26. What is the facility available in Word processing software to prepare a same letter to send different receivers' addresses?

- (1) Merge cells. (2) Mail merge (3) Thesaurus. (4) Merge and Centre

27. What is the answer which included only Word Processing Software?

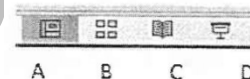
- (1) Microsoft Word, Open office Writer, VisiCalc
(2) Open office Writer, libre office Writer, Google Sheet
(3) iWork Pages, Open office Writer, Office. 365 Word
(4) Kingsoft writer, Open office Writer, libre Office Calc

28. What is the shortcut key combination that can be used to move froth one step to the pre step in a word processing software?

- (1) CTRL + Y (2) CTRL + Z (3) CTRL + J (4) CTRL + P

29. Followings are different views of slides in presentation software. Select the view which we can see a particular slide as it is displayed on the screen.

- (1) A (2) B
(3) C (4) D



30. To display the total of the values in the range A1 to A4, Write the correct function that must be written in cell A5.

- (1) = Count (A1:A4)
(2) = Sum (A1:A4)
(3) = Sum (A1: A4)
(4) = Total (A1:A5)

	A	B	
	100	78	
	125	51	
Ab		56	
	202	92	

31. If enter as "= Count (A1:B3)" in the cell C1 Which one is the correct answer,

- (1) 410 (2) 5 (3) 704 (4) 6

The following questions 32 to 34 are based on the given database tables of Lecturer, Course and Lec_Course.

Lecturer Table

Lec_id	Lec_Fame	Lec_LName
LA001	Jayantha	Siriwardhana
LA002	Kamal	Wijenayaka
LA003	Thissa	Disanayaka
LA004	Wasanthi	Suraweera
LA005	Chanika	Kaluarachchi

Course Table

Course_id	Course_Name	Faculty
IM001	Computerstudies	Applied sciences
IM002	Environmentatstudies	Social sciences
IM003	Economics	Social sciences
IM004	Food Technology	Applied sciences
IM005	Geography	Social sciences

Lec_Courses Table

Lec_id	Course_id	Duration
LA005	IM001	13 yr
LA004	IM002	2 yr
LA002	IM005	1 VT
LA003	IM003	1 1/2 yr
LA005	IM004	2 vt

32. Primary key of the Lec Course table is,

- (1) Lec_id (2) Course_id (3) Lec_id + Duration (4) Lec_id + Course_id

33. Consider the following statements.

- A. Course Id is the primary key of the Course table.
 B. Lec Id is the primary key of the Lecturer table.
 C. Lec Id is a foreign key of the Lecturer table.

- (1) A and C only correct. (2) A, B and C all are correct.
 (3) A, B and C all are wrong. (4) B and C only correct.

34. The lecturer who does lectures for a 2-year program in the Social Sciences faculty is.

- (1) Wasanthi Suraweera (2) Chanika Kaluarachchi
 (3) Kamal Wijenayaka (4) Jayantha Siriwardhana

35. Consider the following uncompleted sentence.

..... is a step of the System Development Life Cycle (SDLC)

What is the most appropriate statement to fill the blank?

- (1) Prototyping. (2) Testing and debugging.
 (3) Collecting of testing data. (4) Existing system is totally terminated and the new system is installed.

36. Select the answer that contains correct procedure of the following activities of SDLC.

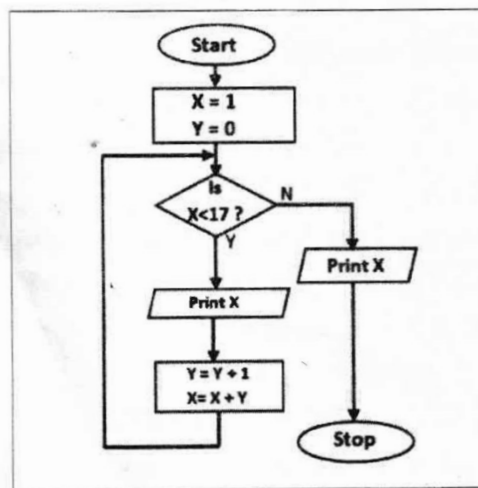
- (1) Observation - Deployment of the system
- (2) System Testing - System maintenance.
- (3) Phase development - Coding of the solutions.
- (4) Prototyping - Identification of requirement.

37. Advantages of electronic databases are,

- A. More efficient in retrieving information.
- B. Easy to obtain copies.
- C. Smaller physical space to store data.

- (1) B and C only (2) A and C only (3) A and B only (4) A, B, C

38



Select the output of the above flow chart

- (1). 1, 2, 4, 6, 11
- (2). 1, 2, 4, 7, 11, 16
- (3). 1, 2, 4, 7, 11, 16, 16
- (4). 1, 2, 4, 7, 11, 16, 22

39. The data transmission speed of a computer network is measured by,

- 1) Hz 2) Mb 3) GHz 4) Kbps

40. What is the correct output of the following pseudo code?

- (1) 101 (2) 100
- (3) 106 (4) 105

```
X= 100 , i = 0
Repeat
    i = i + 1
    X = X + i
Until ( i > 2)
Print X
```